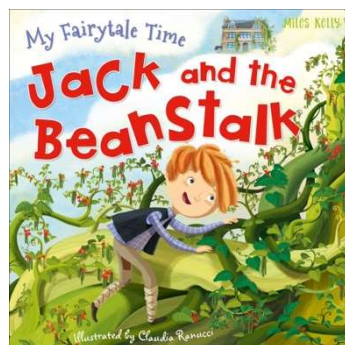


# Year 1: The Secret Garden

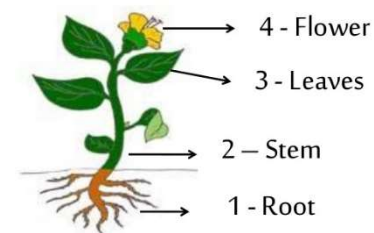
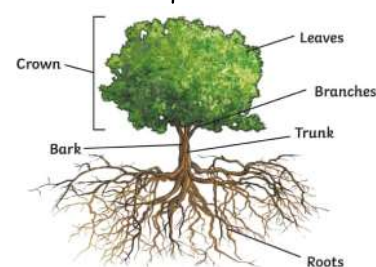
# Summer 1

Key vocabulary	Definition and Key Facts
root	The part of a plant that anchors it to the ground and absorbs water and nutrients.
flower	The part of a plant that is often brightly coloured and grows at the end of a stem.
stem	The thin, upright part of a plant on which the flowers and leaves grow, and which carries food, water and nutrients.
leaf	The parts of a tree or plant that are flat, thin and usually green.
seed	The hard shell from which a new plant grows.
bulb	The underground swollen part of a stem that grows into a flower or plant.
tree	A tall plant that has a hard trunk, branches and leaves.
deciduous	A type of tree that loses its leaves in the autumn every year.
evergreen	A type of tree that keeps its leaves all year round.

## Books



## The parts of common trees and plants



## Deciduous trees



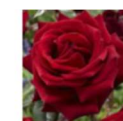
## Evergreen trees



## Common garden plants



vegetable patch



rose



poppy



sunflower

## Common wild plants



dandelion



daisy



buttercup



nettle



clover