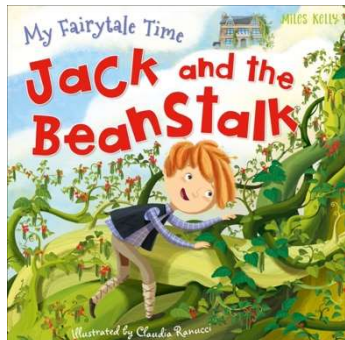
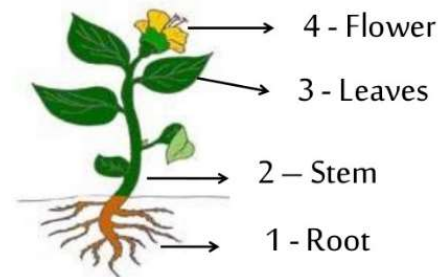
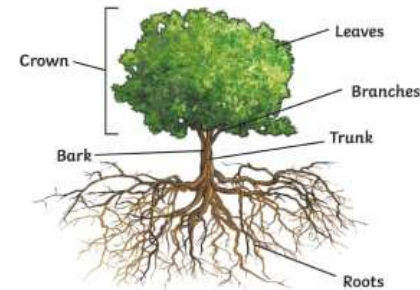


Key vocabulary	Definition and Key Facts
root	The part of a plant that anchors it to the ground and absorbs water and nutrients.
flower	The part of a plant that is often brightly coloured and grows at the end of a stem.
stem	The thin, upright part of a plant on which the flowers and leaves grow, and which carries food, water and nutrients.
leaf	The part of a tree or plant that is flat, thin and usually green.
seed	The hard shell from which a new plant grows.
bulb	The underground swollen part of a stem that grows into a flower or plant.
tree	A tall plant that has a hard trunk, branches and leaves.
deciduous	A type of tree that loses its leaves in the autumn every year.
evergreen	A type of tree that keeps its leaves all year round.

## Books



## The parts of common trees and plants



vegetable patch



rose



poppy



sunflower



dandelion



daisy



buttercup



nettle



clover

## Key Knowledge

- Seeds need water to grow into plants.
- Leaves catch sunlight to help the plant to make its own food.
- Flowers attract insects and birds.
- Petals are special leaves that can be white or coloured that form part of the flower.
- Plants that are grown in places like gardens and parks are called garden plants. These are usually planted and looked after by people.
- Some plants grow wherever their seeds fall. We call these wild plants. They are not planted by people.
- In autumn, deciduous trees lose all of their leaves
- Evergreen trees keep their leaves all year round